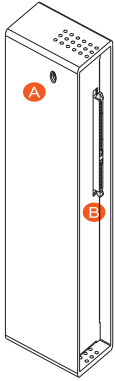


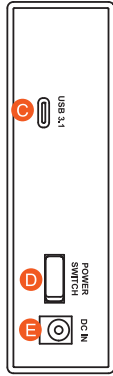
## 3S2U / 3S2U+ Adapter 快速安裝導引

### 產品示意圖與配件表

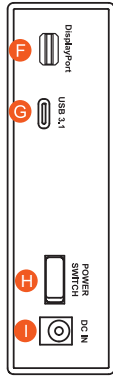
前視圖



背視圖(3S2U)



背視圖(3S2U+)



- A 硬碟讀取燈
- C USB 3.2 Gen2 Type-C 埠 (10Gbps)
- F Mini Display埠 (DP1.1a)
- B SATA 連接埠
- D 電源開關
- G USB 3.2 Gen2 Type-C 埠 (10Gbps)
- E 電源插座
- H 電源開關
- I 電源插座

注意：開啟產品電源前，請確認產品與主機端（開機狀態）已連接，否則產品將進入休眠狀態。

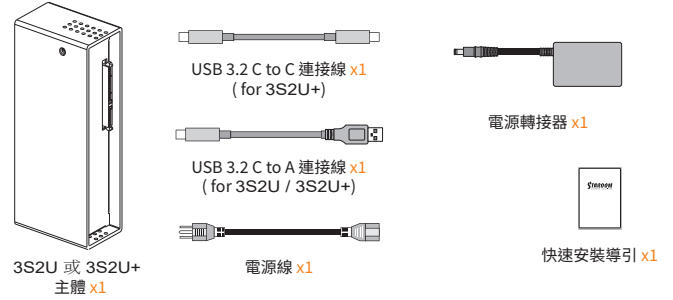


V0.1(May 2022)

1

打開包裝外盒後，包裝內容應包含下列組件：

### 產品配件表



- 請先確認相關配件與產品本身是否有受損或是缺少配件，若有任何疑問，請與您的經銷商或業務人員聯絡。
- 請前往官網-產品資料下載其餘相關資源。

### 燈號說明

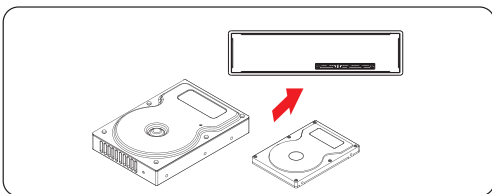
狀態	硬碟狀態燈
資料存取	藍燈閃爍
硬碟閒置	藍燈恆亮
電腦休眠	藍燈熄滅

2

### 硬體安裝

請參照下列步驟，完成 3S2U & 3S2U+ 的硬體安裝：

1. 當你打開包裝後，首先請先檢查產品主體以及附件是不是有毀損或是短缺情形，如果發現產品主體及附件短缺，請立刻與您的供應商聯絡。
2. 將主機置放於平穩空間上，並確保其通風良好，不會堵塞通風口。（請避免接近水源或是其他容易造成產品損傷的環境）
3. 硬碟安裝完成後，視電腦 USB 埠類型選擇配件中的對應的 USB 連接線，連接電腦與3S2U & 3S2U+的USB埠。



4. 將電源線與電源轉接器連接好，並將兩端接頭各自接到 3S2U & 3S2U+及電源插座後，啟動 3S2U & 3S2U+。
5. 此時，您的作業系統將會自動辨識到儲存容量；待辨識成功後，請依據您所需的儲存格式，將系統依照作業系統的指示完成格式化。待硬盤格式化完成後，便可直接使用 3S2U & 3S2U+。

※ 若您使用的是 USB 3.2 C to A 連接線，主機端的 Type-A 需為 USB 3.2 Gen2 規格方可達到最佳存取效能。

3

### 產品使用注意事項

1. 硬碟格式化後，由電腦主機作業系統所辨識 3S2U & 3S2U+ 的實際總容量會與硬碟廠所標示的容量加總後，將有所差異。
2. 當系統運作時，請勿任意移除，以免導致資料遺失。
3. 為了確保節能功能的正常運作，請將 USB 連接線常態性與電腦端保持連接。
4. 當您需要關閉或移除3S2U & 3S2U+ 時，務必透過您所操作的作業系統中執行硬碟安全移除後，方進行電源關閉的動作。
5. 強烈建議除了使用3S2U & 3S2U+ 的資料儲存功能外，請針對重要資料備份到另一個儲存裝置上或遠端備份，雙重備份您重要的資料。若您儲存在 3S2U & 3S2U+的資料損毀或遺失，STARDOM 將不負任何的責任。

感謝您使用 銳銜科技股份有限公司 的產品。

本手冊裡的資訊在出版前雖然已經被詳細確認，但實際產品規格將已出貨時為準；任何的產品規格或相關資訊更新，請您直接上 [www.STARDOM.com.tw](http://www.STARDOM.com.tw) 網站查詢，或直接與您的業務聯絡窗口聯繫，本公司將不另行通知。

如果您對 銳銜科技 的產品有任何疑問，或是想獲得最新產品訊息、使用手冊或軟體，請您聯絡 [services@stardom.com.tw](mailto:services@stardom.com.tw)，我們將儘速回覆您。

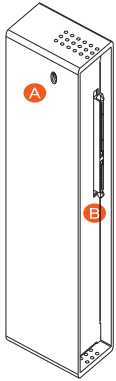
STARDOM 為 銳銜科技股份有限公司 旗下品牌之一  
本說明相關產品內容歸 銳銜科技股份有限公司 版權所有

4

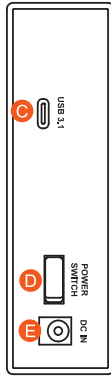
## 3S2U / 3S2U+ Adapter Quick Setup Guide

### Product Illustration and Parts List

Front View



Rear View(3S2U)



Rear View(3S2U+)



- A** HDD access light
- B** SATA Port
- C** USB 3.2 Gen2 Type-C port (10Gbps)
- D** Power switch
- E** Power socket
- F** Mini Display port (DP1.1a)
- G** USB 3.2 Gen2 Type-C port (10Gbps)
- H** Power switch
- I** Power socket

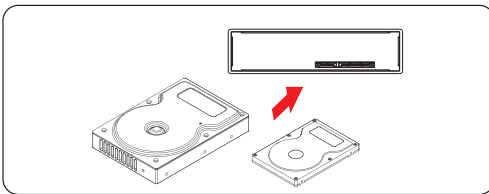
**NOTE:**  
Please make sure that the product is connected to the host (power on status) before turning on the power, otherwise the product will be on the sleep mode.



### Hardware Installation

Please follow the instructions below to complete the hardware installation.

1. Open the package and take out the product making sure that all the enclosed contents are not damaged or missing. Should you find damages or missing contents, please contact your supplier immediately.
2. Place the enclosure on a stable surface, ensure that it is well ventilated without blockage to the vent and kept away from locations near water or where the product may become vulnerable resulting in damages.
3. Choose one of the provided cables of your preference to connect the preferred interface connection on the enclosure unit to the computer.
4. Depending on the type of computer USB port, select the corresponding USB cable in the accessory to connect the computer to the USB port on the 3S2U & 3S2U+.

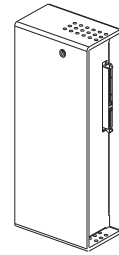


5. Connect the power cord to the power adapter, connect the connectors at both ends to the 3S2U & 3S2U+ and the power socket, and then start the 3S2U & 3S2U+.
6. After the computer is turned on, the storage capacity will be automatically recognized by the operating system. After the storage capacity is recognized successfully, please format the system according to your desired storage format and follow the instructions of the operating system. After the hard disk is formatted, the 3S2U & 3S2U+ can be used directly.

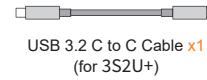
※ If you are using a USB 3.2 C to A cable, the Type-A on the host side needs to be USB 3.2 Gen2 for best access performance.

The following items should be inside the package upon opening:

### Product Parts List



3S2U & 3S2U+  
Product x1



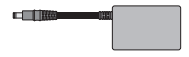
USB 3.2 C to C Cable x1  
(for 3S2U+)



USB 3.2 C to A Cable x1  
(for 3S2U / 3S2U+)



Power Cord x1



AC/DC Adapter x1



Quick Setup  
Guide x1

- Please check the product and accessories for any defect or missing parts. If you have any questions, please contact your product supplier.
- Please visit the official website - Download page (<http://www.stardom.com.tw/STARDOM2016/download.php>) to download other related resources.

### The Indication of HDD Status

Status	HDD Status Light
Data access	Blue light flashing
HDD idle	Blue light always on
Sleep mode	Blue light off

### Important Notice

1. After the hard disk is formatted, the actual total capacity of the 3S2U & 3S2U+ detected by the computer operating system will vary from the sum of all hard disk capacities stated by the manufacturer.
2. To prevent data loss, do not remove 3S2U & 3S2U+ while the system is running.
3. Please always connect the USB cable to the computer to ensure the energy saving function operating normally.
4. If the 3S2U & 3S2U+ needs to be shut down or disconnected, please ensure the HDD is safely removed through your operating system before turning off the power.
5. We strongly recommend backing up important data stored on the 3S2U & 3S2U+ to another storage device or a remote site. STARDOM will not be held liable for the damage or loss of data you stored on the 3S2U & 3S2U+.

Thank you for choosing STARDOM's product.

The information provided in this manual was checked before publication, but the actual product specifications may have changed before shipping; Latest product specifications and updates can be found at [www.STARDOM.com.tw](http://www.STARDOM.com.tw) or through your sales representative. No separate notifications will be provided by our company.

If you have any questions about RAIDON products or would like to receive the latest product information, instruction manuals, or firmware, please contact [services@stardom.com.tw](mailto:services@stardom.com.tw) for assistance.

STARDOM is one brand under RAIDON TECHNOLOGY, INC.

All product-related content in this manual are copyrighted by RAIDON TECHNOLOGY, INC.